

Digital impressions with Dentsply Sirona

The right choice for all your digital needs.

dentsplysirona.com/digital-impression

THE DENTAL
SOLUTIONS
COMPANY™

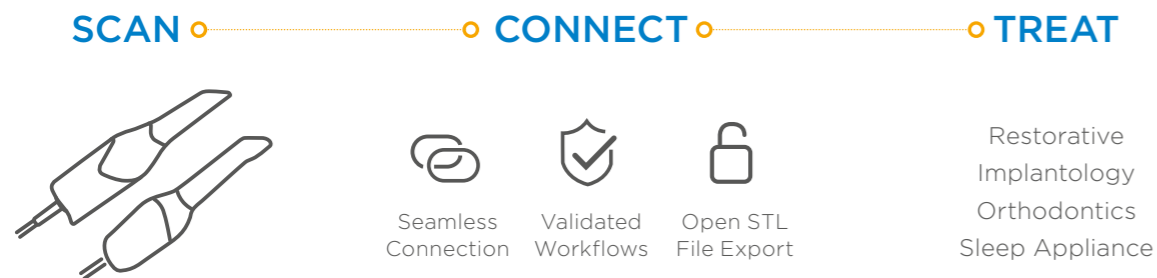
 **Dentsply
Sirona**

The digital workflow starts with a scan

Have you been waiting for the right time to go digital? The wait is over! Here is your chance to get started. Digital impressions are easier, faster, and more precise than ever before. They help facilitate optimum treatment outcomes and offer a wide variety of clinical workflows and indications.

You can keep your existing workflows, but you will quickly find improvements everywhere: You won't have to repeat impressions, restorations will fit better, and treatment times will be noticeably shorter.

Start scanning and you will be surprised how much you enjoy the digital workflow, and how much your efficiency and collaboration with your partners improves. Your patients will thank you. Your team will love it.



Digital impression is a state-of-the-art technology and provides the basis for the best treatment results. Collaborate more closely and keep working with your lab and your preferred partners by using the option to communicate with them in real time. Use our validated, secure workflows or export cases in standard open formats. Whether it is prosthetics, implantology, orthodontics or other areas – you will always benefit from full flexibility.

We look forward to joining you on your personal journey into digital dentistry.

The right scanner for all your digital needs

Digital impression with Dentsply Sirona provides you with flexible workflow options to elevate your patients' experience and prepare your practice for long-term growth. Primescan and Omnicam offer the perfect starting point into digital dentistry. While easy to use, they also provide you with the flexibility to design your individual workflows and enable you to expand your treatment options in the fields of Restorative, Implantology, Orthodontics and Sleep Appliances.

Easy to use

Impression taking with Primescan and Omnicam is easy and intuitive, especially with Omnicam's guided scanning option for full arch scan. This procedure can be delegated, saving time and bringing more joy to your assistants. The mobile acquisition center comes with a long battery charge.

Time saving

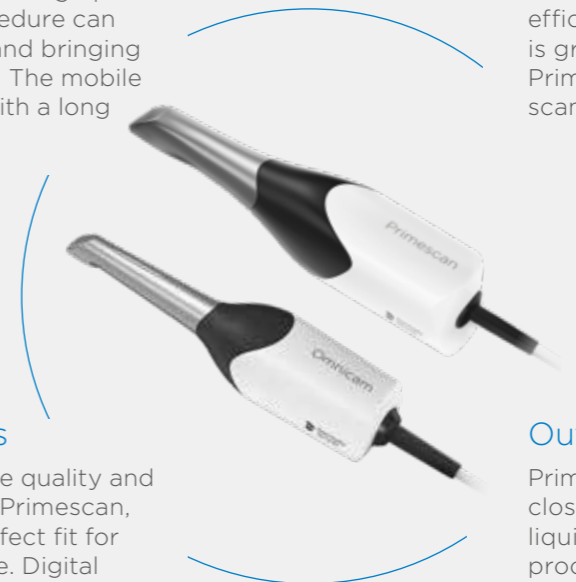
Easy and fast scans with shorter treatment time and immediate control of scan results lead to increased efficiency in the practice. Omnicam is great for quadrant scans and Primescan outstanding for full arch scans.

Excellent scan results

Between Omnicam's reliable quality and outstanding accuracy with Primescan, both scanners ensure a perfect fit for any restoration or appliance. Digital models are also less prone to errors than analog casts and reduce the need for repeated procedures. Your laboratory will appreciate it.

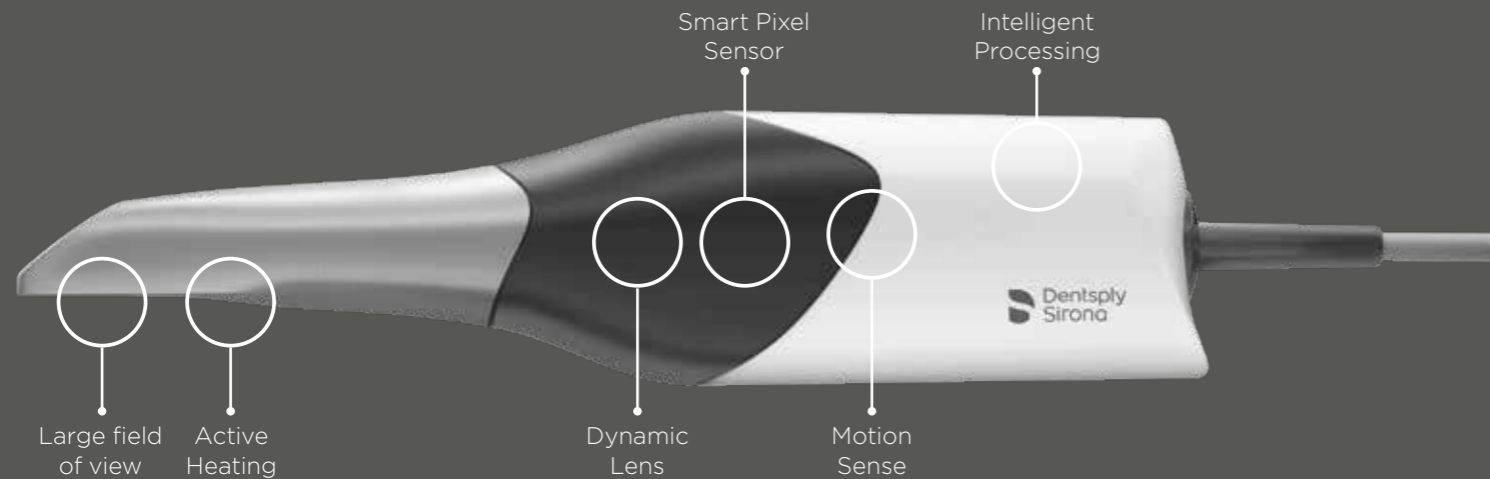
Outstanding Hygiene

Primescan and Omnicam both have fully closed scanning windows to prevent liquid infiltration during the scanning process. The mobile acquisition center is approved as a medical device to be used in the vicinity of patients, unlike consumer notebooks. Closed surfaces allow for easy and fast disinfection. Additionally, no physical models means no cross contamination risks.



Primescan

Engineered for superior performance

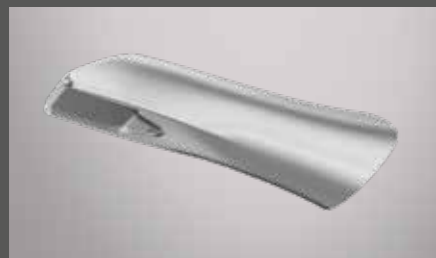


Primescan highlights at a glance

- Future-proof patented technology
- Full arch scan in less than a minute
- Easy scanning of deep cavities, steep inclines and reflective surfaces like metal crowns
- Simple scanning of large edentulous areas and palates
- Unique three sleeve concept

Hygiene protection sleeves for Primescan

With three different sleeve varieties, you can easily integrate the intraoral scanner into your hygiene workflow. The sleeves can be disinfected and autoclaved or disposed after use. Choose the sleeve which fits best for you and the requirements of your market.



Autoclavable steel sleeve with single-use window



Disposable sleeve



Steel sleeve with sapphire glass window

Speed. Usability. Accuracy.

Start scanning right away

Primescan offers continuous self-heating for fog-free scanning – which means you are always ready to go.

Faster and smoother scanning

The innovative Smart Pixel Sensor processes more than 50.000 images per second, producing photorealistic and highly accurate data. Thanks to this ability to scan at an incredible data density, Primescan delivers complete 3D structures of everything in its field of view – from the very first scan. The excellent scan results are instantly displayed on the touchscreen of the Acquisition Center.

Faster calculation and less interruptions

Intelligent Processing ensures the optimal collaboration with the software by transmitting exactly the data needed to proceed. The results: faster calculation and fewer scan interruptions.

Easy accessibility of difficult situations

Steep angles? Hard-to-access areas? Reflective materials? An easy job for Primescan. The scanner supports scanning of shallow angles (>5°) allowing it to capture everything within its field of view without tilting.

You get what you need

Primescan's large field of view captures everything that is within its view. Its dynamic depth scan technology enables perfect sharpness and outstanding precision, even at a measuring depth up to 20 mm – a crucial advantage for sub-gingival indications. The automatic artifact removal cuts out extraneous data such as a cheek, tongue or finger in real time as you are scanning.

Smooth scanning of reflective materials

Primescan captures scanning data from tooth enamel and restorations so well that powdering the teeth does not have a significant effect on scan performance.

Measurement of different surfaces

Thanks to Primescan's highly accurate data, fast and easy scanning of all dental surfaces, including metal crowns is possible.

Low-noise 3D data

Thanks to the high frequency contrast measurement in each pixel, the images are extremely sharp. This exceptional sharpness ultimately leads to a precise fit for fabricated restorations.

Increased optical resolution

The shorter the wavelength, the finer the measurements. Due to its very short wavelength, blue light enables Primescan to measure even the tiniest details.

Primescan's precision and accuracy have been proven in several studies. For more detail, please refer to our website dentsplysirona.com/primescan.

Omniscam AC – Proven reliability

- Best-selling scanner with the biggest community
- Multi-use functionality for all relevant applications, with over 7 million impressions* per year
- Small scanner head for easiest access
- Real color scanning
- Great accuracy and performance



Omniscam AF – Flexibility choice

- Comprises all individual components of Omnicam AC
- Includes a flexible tabletop camera tray, a monitor and a PC
- Easy transportation
- Flexibility to scan and design simultaneously in different rooms



Acquisition Center

Medical device approved for use in patient vicinity



Touch screen with anti-reflective surface

enables natural and intuitive SW operation.

Kinematics for flexibility

The large screen can be moved in all directions for perfect ergonomics, as well as comfortable patient communication.

Power cable holder (on the back)

Active window heater

Extensive battery life

The battery buffer allows for full mobility between treatment rooms and enables over 60 minutes of scanning without external power source.

Smooth surface, very few gaps

make it easy to clean and disinfect.

Approved medical device

In contrast to a regular laptop, Primescan AC and Omnicam AC may be placed right next to the patient.

High-performance scanner and acquisition center from Dentsply Sirona

Choosing the right scanner depends on your individual needs and requirements. Regardless of whether you choose Primescan or Omnicam, you can be sure that Dentsply Sirona is the right choice.

Primescan and Omnicam features at a glance

	Primescan	Omnicam
Scan procedure	Dynamic depth scan (up to 20 mm)	Triangulation
Powder-free	yes	yes
Scans reflective metal surfaces (gold, amalgam, etc.)	yes	with restrictions (if necessary, apply powder locally)
Scans in color	yes	yes
Photorealistic scans	yes	yes
Color analysis	yes (not available for disposable sleeve and for autoclave solution)	yes (not available with disposable sleeve)
Constantly self-heated to prevent fogging	yes, internally active	yes, passively in scanner cradle
Warm-up time	just a few minutes after starting the AC	approx. 15 min
Full arch scan* (upper, lower, bite registration, model calculation)	approx. 2-3 min	approx. 8-12 min
Wipe disinfection	yes	yes
Autoclavable**	yes	no
Dry heat sterilization	yes	yes
Disposable sleeves	yes	yes
High-level disinfection	yes	yes
Overall dimensions (W x H x L)	50.9 x 58.8 x 253 mm	40 x 50 x 223 mm
Weight	457 g (plastic sleeve) 524.5 g (metal sleeve)	316 g
Scanner head (W x H)	22.5 x 20.7 mm	16.1 x 16.2 mm
Mirror sleeve (L)	110 mm	107 mm

* Depending on experience and routine with the system.

** Only applicable for autoclave sleeve.

Freedom of collaboration. Secure data transmission with the Connect Case Center.

Whether you start your workflow with Primescan or Omnicam, Connect Case Center – Dentsply Sirona’s unique portal for fast and easy collaboration – gives you the option to transmit your data securely and also anonymized, if desired. With the click of a button, your laboratory or partner receives complete case information immediately. All Dentsply Sirona scanners include a Connect Case Center Inbox license which you can give to a laboratory or partner of your choice. You can also transfer the data with open STL format.

Enhanced communication. No additional costs.

- Simple and safe data transfer within seconds (HIPAA and GDPR compliant).
- The dental laboratory receives information immediately by e-mail confirming receipt of the order.
- Review and discussion of the 3D model on the screen simultaneously during the patient consultation allowing for an immediate correction of the impression or the preparation without the need for an additional appointment.
- Convenient transmission of additional data (patient images, screen shots, etc.).
- No license fees.

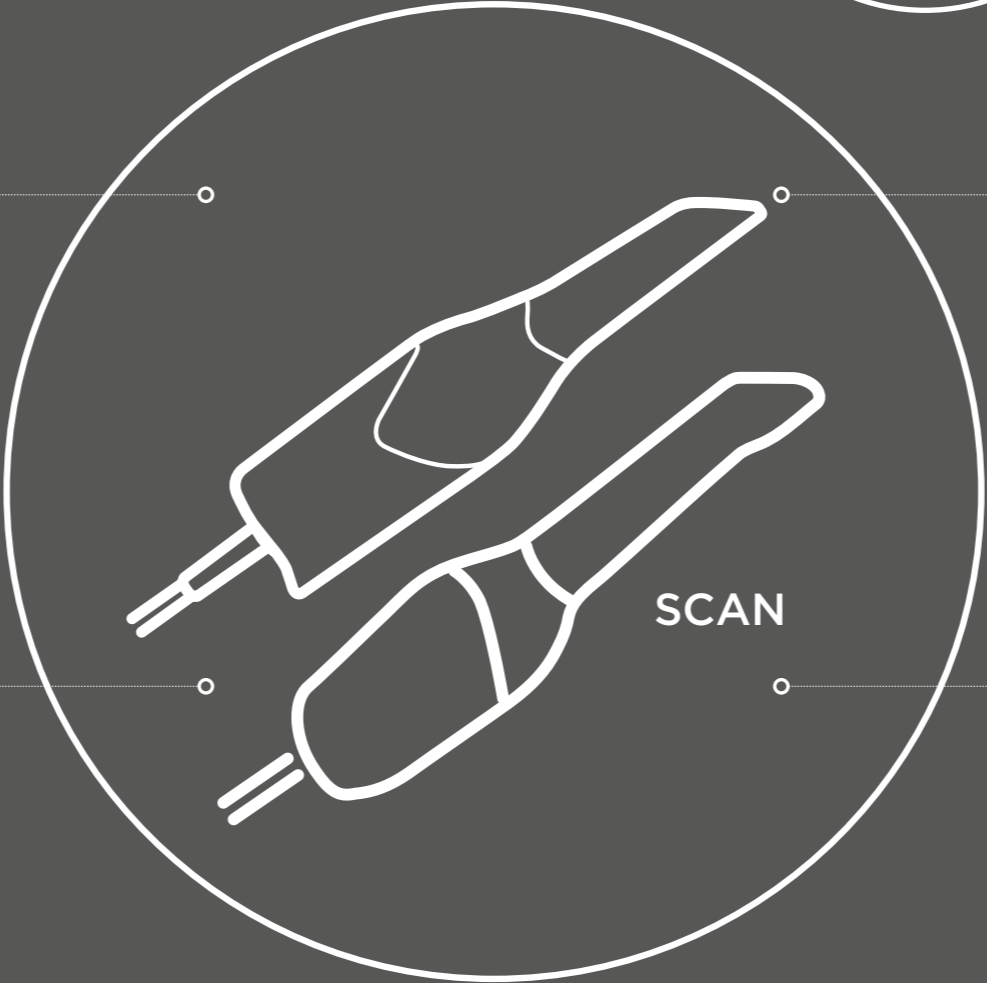


“By using the digital impressions, there is no loss of time for us as a laboratory. With Primescan and Omnicam, distorted impressions are a thing of the past. Both scanners are of exceptional quality. But the accuracy of Primescan is really impressive. This makes it easy to create accurate dental restorations working directly with the original data without creating a physical working model.”

Ulrich Thielen | Master dental technician | Germany

dentsplysirona.com/connectcasecenter

Connectivity opens a world of possibilities.



+ PATIENT MONITORING

Make the most of your intraoral scanner and visualize volumetric changes in the soft tissue, hard tissue and the position of the teeth over time. OraCheck provides a 3D comparison between two or more digital scans.

Implantology

Make use of various workflow options with Primescan for both implant surgery as well as implant prosthetics and directly connect to great partners such as Simplant, Atlantis and Azeno.

Sleep Appliance

Use Primescan to expand your range of applications in the field of sleep appliances. Send the scan data to Panthera Sleep or your preferred partner to order high quality customized sleep devices.

+ CEREC UPGRADE

A great option. You can expand Primescan into a CEREC System at any time and offer your patients high-quality dental restorations in a single visit.

Restorative

Digitize your workflows while keeping your established relationships. Your lab technician will appreciate the great scan results and easy data communication for all restorative indications, as well as for all other application areas.

Orthodontics

Primescan also opens the door to the digital world of orthodontics. Send data to your specialized partners to order orthodontic appliances, or take advantage of a seamless Dentsply Sirona workflow with SureSmile® aligners for a quick and efficient treatment.

From the practice to the lab

Our intraoral scanners allow you to keep working with your lab and your preferred partners while using the option to communicate with them in real time and simplify closer collaboration. You can also take advantage of our validated as well as seamless workflows. Transmit your data securely - in anonymized format, if desired - to your dental lab or partner via the Connect Case Center.



Open

The Connect software can generate 3D models in STL format.



Validated

Our validated workflows allow for securely sending data in a suitable, high-quality format via the Connect Case Center.



Seamless

Working with Dentsply Sirona products from start to finish means enjoying seamless workflows, which are not only 100% safe, but also extremely comfortable.



VALIDATED & SEAMLES WORKFLOWS:

inLab®
CEREC®
SureSmile®
Atlantis®
Azento™
Simplant®
exocad



Restorative workflows



1 Scanning

Both Primescan and Omnicam can quickly and accurately generate an impression of the preparation, the antagonist and the bite in the patient's mouth - powder-free and in color. You can interrupt and resume the scan procedure at any time. Digital impression taking has the advantage that you can assess quality right there on the screen.



2 Data transmission

Upload the 3D model to the Connect Case Center and complete the digital order form in a matter of seconds. With a single click in the software, the case is transmitted to the lab of your choice via the Connect Case Center without fail. In addition to secure and anonymized transmission, if desired, you and your lab also have a high level of documentation. All communication with your dental lab will be documented. Additionally, you can transfer data with the open STL format. All of these processes are much faster than with traditional impressions.



3 Data reception by the lab of your choice

All third parties are able to access data transmitted via Connect Case Center by installing a Connect Case Center Inbox, even labs without inLab software. Thanks to the digital technology, your lab can now exchange images with you and discuss details in real time. You can even respond to questions from your lab while your patient is still in the chair. Your collaboration will become closer than ever before.

Orthodontic treatments



More and more often, patients ask for orthodontic corrections for various reasons. Primescan and Omnicam open up the digital world of orthodontics and enable you to satisfy your patients' desire for a healthy, beautiful smile made by the dentist they trust: you.

The intraoral scan is the starting point of any aligner planning. With Primescan and Omnicam, you can work with specialized partners to order orthodontic appliances - or take advantage of a seamless Dentsply Sirona workflow with SureSmile® aligners for a short and efficient treatment.

The optional CEREC Ortho software is available for special orthodontic tools such as model analysis and treatment simulation.

With SureSmile Aligner, you can expand your treatment range with orthodontic procedures. More than 20 years of experience in digital planning for orthodontic treatments give you the security of excellent initial setups and predictable, compelling results. The SureSmile software is browser-based and can be run on any practice PC without local installation. Precise processing of data and thorough quality control ensure outstanding fit, excellent durability and a virtually invisible treatment.

dentsplysirona.com/clinictopartner



1 Collecting records

Orthodontic treatments require full arch scans which is where Primescan really shines. Capture a highly accurate full arch scan with Primescan or Omnicam as well as intraoral and extraoral photos at the first appointment. Optional for clear aligner treatment: X-ray data for a more comprehensive diagnosis.

2 Check and Analysis

The optional CEREC Ortho Software enables you to perform a model analysis and treatment simulation for higher case acceptance right after the scan.

3 Treatment Planning and Aligner Fabrication

Take advantage of the integrated workflow and transmit your case seamlessly to SureSmile for clear aligner treatment planning. After your approval of the treatment plan, SureSmile aligners are fabricated in a state-of-the-art process using industry leading Essix® material.

4 Starting Treatment

Once you have received the Patient Kit, it is time to start your patients' treatment to give them a healthy, beautiful smile.

CEREC Ortho Software

- CEREC Ortho Software makes it possible to perform a model analysis right after the scan. The software AI provides you with valuable information on Angle Class, Bolton index, overjet, overbite, transversal distances, available space and symmetry.
- A treatment simulation automatically aligns teeth and displays a possible result only minutes after the scan - a great way to help your patients make a decision before you order a treatment plan.





Digital implant workflows

Different possibilities to shape your digital implant workflow with Primescan and Omnicam

For implantology, digital technologies play a central role and intraoral scanning is a logical step toward a full digital implant workflow. With Primescan and Omnicam you benefit from highly accurate scan data that opens new possibilities to consistently increase security, effectiveness and comfort for you, your team and your patients. Rely on the safe, seamless workflows of guided implantology for greater patient comfort and best results.



1 Digital capturing

See more with a CBCT image, for example, from our Axeos or Orthophos 3D systems that visualizes the patient's anatomical situation. With the intraoral scanners Primescan and Omnicam, you can capture the patient's dentition and surrounding soft tissues.



2 Restorative and implant planning

Send the CBCT data, intraoral scan and clinical specifications to your lab or partner of choice to obtain an implant treatment plan without the need to purchase a planning software. The combination of bone situation and soft tissue information offers the optimal basis for ideal restorative and implant planning.



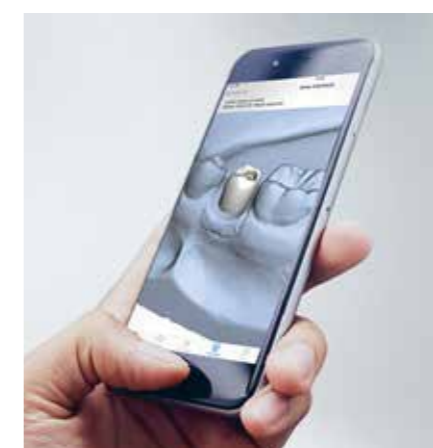
3 Guided surgery

Using a surgical guide ensures precise implant placement and sets the path for safe and accurate treatment. You can order the surgical guide by your lab or partner of choice, or manufacture them directly in your practice, for example, with CEREC Primemill.



4 Scanning

Right after the implant is placed during surgery, take an accurate digital impression in natural colors. It could not be easier. With the easy-to-handle Primescan and Omnicam, impression taking is more pleasant and time-saving than ever before.



5 Restorative design and manufacturing

Work together with your lab or partner of choice to design and manufacture the abutment and implant restoration. Atlantis patient-specific abutments from Dentsply Sirona can easily be viewed and edited before design and manufactured and finalized by your lab.



6 Final restoration

As soon as you have received the patient-specific solution, you can place the restoration.




"Primescan has been a complete game changer for me specifically from a full arch implant perspective. I've been blown away with how accurate it has been in both our testing and clinically. I feel completely comfortable scanning anything from a single tooth to a full-arch implant case knowing full well that we'll get very predictable results due to the accuracy of the scanner."

Dr. Mark Ludlow | Prosthodontist | USA

dentsplysirona.com/clinictopartner

- **Simplant®** offers restorative and implant planning based on the CBCT data, intraoral scan and clinician-made specifications and the right surgical guide for more precise and predictable implant treatments.
- **Atlantis®** is our solution for the manufacturing of patient-specific prosthetics for all major implant systems.
- **Azento™** is our convenient start-to-finish implant solution for single tooth replacements.



It's all here – Azento: a dental implant solution

Streamline your treatment with the convenient and custom-designed start-to-finish implant solution for single tooth restorations. You receive a fully guided surgical solution, including implant and custom healing abutment, sharp drills every time and only the drills you need for your specific case.

Digital Sleep Appliance treatment

Obstructive Sleep Apnea is a significant, life-threatening, yet under-treated chronic disease. While it is traditionally treated by Continuous Positive Airway Pressure (CPAP) devices, their low compliance rate (**50%** non-compliance after 6 months¹) has paved the way for treatment alternatives such as oral sleep appliances. These small and practical devices can be used for snoring and mild to moderate OSA. They can also be used for severe OSA when patients are non-compliant with CPAP.

Thanks to digital impression, sleep appliance treatments have never been so easy and comfortable. With Primescan and Omnicam you get outstanding and reliable scan data to create custom-made sleep devices for your patients.

¹ Efficacy vs Effectiveness: CPAP and Oral Appliances. Journal of Dental Sleep Medicine. Vol. 2, No. 4, 2015. K Sutherland, PhD; C L. Phillips, PhD;

² J.G. Park, Encyclopedia of Sleep, 2013

³ Obstructive sleep apnea is a common disorder in the population—a review on the epidemiology of sleep apnea. Journal of Thoracic Disease, 2015 Aug; 7(8): 1311-1322. Karl A. Franklin and Eva Lindberg

Up to
45%
of your patients
snore²

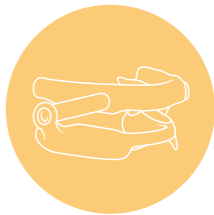
Nearly
20%
suffer from
Obstructive
Sleep Apnea³

Snoring and Obstructive Sleep Apnea associated risks include:

- Excessive daytime sleepiness
- Diminished attention
- Concentration, memory and mood disorders
- Diabetes
- Heart disease
- Signs and symptoms of depression

Pictures of sleep appliance with courtesy of Panthera Dental.

dentsplysirona.com/clinictopartner



- Panthera Dental offers a comfortable solution for snoring, mild to moderate sleep apnea and severe sleep apnea when CPAPs are refused. Their cutting-edge Digital Sleep Apnea Devices (D-SAD) are made out of medical grade nylon - a material of superior quality and outstanding intraoral haptics.
- Validated workflow for Primescan allows you to offer Panthera Dental's custom-made devices to treat Sleep Apnea.



1 Scanning

It does not matter if using Primescan or Omnicam. Take a full arch scan in less than one minute and a protrusive bite registration in our Connect SW.



2 Data transmission

Use the Connect Case Center to send the scan data to our recommended partner Panthera Dental or another partner of your choice. You can also transfer the data with the open STL format.



3 Digital Sleep Appliance treatment

Each device is individually designed for your patient based on your Primescan and Omnicam data. Thanks to the CAD/CAM technology of our recommended partner Panthera Dental, you will receive a custom-made device that fits perfectly, allowing your patients to enjoy considerable improvements in their quality of life.

Patient Monitoring

Visualize intraoral changes over time with OraCheck

Make the best of your intraoral scanner and visualize volumetric changes in the soft tissue, hard tissue and the position of the teeth over time. OraCheck provides a 3D comparison between two or more digital scans. The software superimposes the scans and visualizes differences in color. With OraCheck, an intraoral scan becomes a standard procedure in the dental office, because it supports the clinician's ability to see and monitor the individual patient situation.

Main features of the OraCheck software



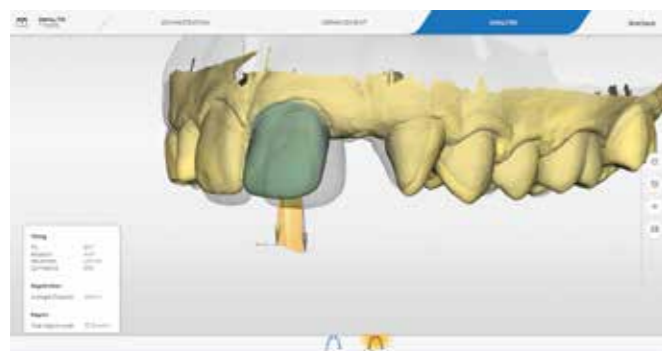
Volume measurement

Calculation of the volumetric change (increase/loss) in mm^3 .



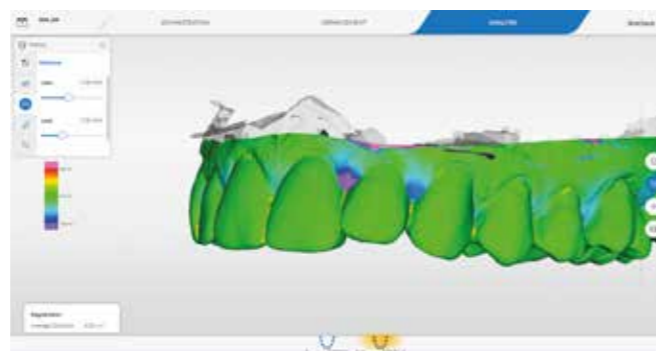
2D cross section

Presentation and measurement of distances in any cross-sections that can be interactively defined.



Tooth movements

Calculation and visualization of tooth movements.



Distance analysis

Visualize the distance between two scans.

dentsplysirona.com/oracheck

CEREC Upgrade

Not mandatory, but a great option

You have successfully integrated digital impressions in your office, and are looking to include digital chairside workflows into your treatments? No problem. You can expand Primescan or Omnicam into a CEREC system at any time and offer your patients high-quality dental restorations in a single visit. With CEREC, you can create restorations chairside in just five clicks.



1 Scanning

Spare your patients the discomfort of conventional impression. Take digital impressions with Primescan or Omnicam. They make scanning easier, more intuitive and ergonomic than ever before. The precise 3D models in natural colors will impress both you and your patients.



2 Design

The CEREC software creates outstanding design proposals, based on the unique Biojaw algorithm. It automatically provides you with a genuine tooth restoration, customized for the individual patient. Benefit from the simple, clearly structured and intuitive user interface.



3 Grinding or milling

The CEREC grinding and milling units and the CEREC software by Dentsply Sirona are completely synchronized. The grinding or milling process for your designed restorations is extremely precise and creates smooth surfaces and margins, as well as ultrafine structures. A large variety of materials is available, and even zirconium oxide can be produced and placed within a single visit.



4 Sintering and finishing

Full ceramic zirconium oxide restorations can be sintered and glazed in the CEREC SpeedFire furnace right in your practice. The induction technology of the furnace offers the shortest sintering and firing times, as well as highly intuitive and simple operation. All other ceramics can be processed in addition to zirconium oxide.

dentsplysirona.com/cerec

Grow your practice with Primescan

Primescan opens the door to all relevant digital workflows. Going digital in your everyday work means you expand possible treatment areas within your practice and ensure greater satisfaction for your patients while growing your business at the same time.

Impress your patients with fast and pleasant intraoral scans in seconds

Enhance your practice value for long-term growth with the latest, future-proof technology

Improve communication with patients and lab partners

Increase practice efficiency by delegating easy and intuitive impression taking with Primescan

More than
75%

of patients are likely to have more preventative treatments as well as more elective procedures if digital technology played a role in their visit.¹

80%

would feel more confident they are getting the best possible dental care if digital technology, such as a 3D intraoral scanner or 3D x-ray, were used in the practice.¹

Study shows
84%

of patients preferred digital to conventional impression taking.²



"The acquisition of the new Primescan brought greater speed and accuracy both in the prosthetic work on teeth and implants and in the scanning of total arches for snoring devices and apnea, orthodontic aligners and guided surgeries. On top of this, it enables a fast and assertive communication with my lab, adding tremendous value to my daily work and providing even greater satisfaction and enchantment to my patients."

Dr. Luciana Sargologos | São Paulo, Brazil

¹ Patient Perceptions Quantitative Research, May 2020 - USA

² Haddadi Y, Bahrami G, Isidor F, Evaluation of Operating Time and Patient Perception Using Conventional Impression Taking and Intraoral Scanning for Crown Manufacture: A Split-mouth, Randomized Clinical Study. Int J Prosthodont 2018;31(31):55-59

dentsplysirona.com/primescan

Playing it safe with Hub

Smooth data transmission, simplified workflows and optimal data backup

If you work with multiple acquisition units, Hub is the ideal choice for you. With Hub, cases are synchronized on all compatible devices, which means that you do not have to re-create or transfer them from device to device.

Hub creates dual backups for smart protection against data loss. Furthermore, data saved on Hub is encrypted so securely that even our technicians would not be able to access them. Hub protects against theft or misuse - securely protecting your patients' privacy.

- Plug & play installation
- Secure local backup
- Synchronized data inside your network



dentsplysirona.com/hub

Dentsply Sirona

Sirona Dental Systems GmbH
Fabrikstraße 31, 64625 Bensheim, Germany
dentsplysirona.com

Procedural Solutions

Preventive
Restorative
Orthodontics
Endodontics
Implants
Prosthetics

Enabling Technologies

CAD/CAM
Imaging
Treatment Centers
Instruments